

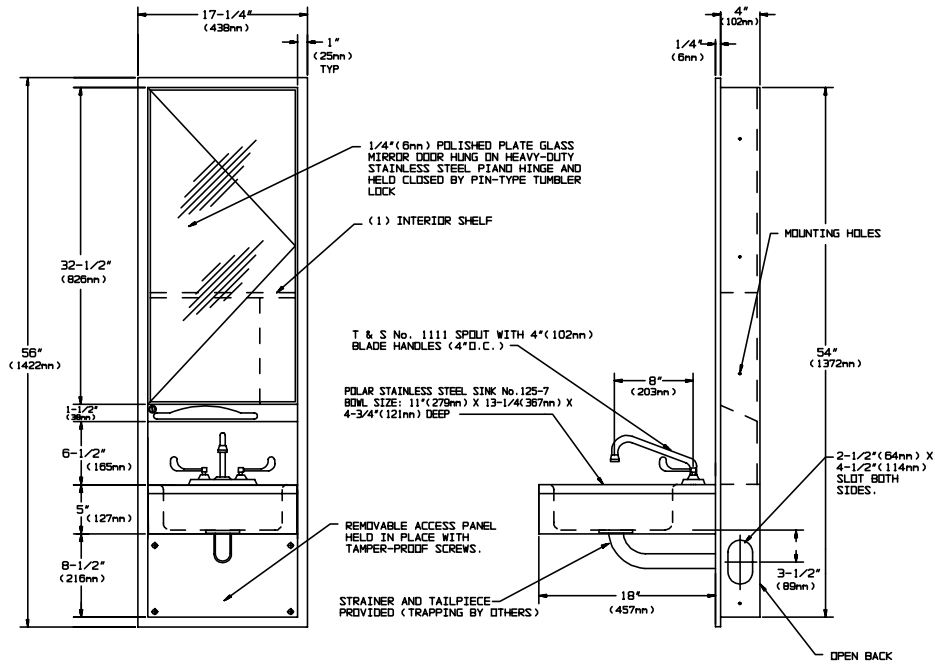


AMERICAN SPECIALTIES, INC.

441 Saw Mill River Road, Yonkers, NY 10701 (914) 476-9000

MODEL No:	0017
ISSUED:	1-87
REVISED:	8-04

MOD-U-LAV STATION



SPECIFICATION

Mod-U-Lav Station shall be comprised of the following elements:

- Mirror door 1/4" polished plate glass
- Towel Dispenser shall hold 600 C-fold or 800 multi-fold towels
- Stainless steel sink w/ strainer and tail piece (trapping by others)
- Faucet set with a gooseneck spout and 4" wrist blade handles
- Removable Access panel w/ tamper resistant screws

The unit shall be fabricated of alloy 18-8 stainless steel, type 304, 22 gauge. All exposed surfaces shall be N° 4 satin finish and shall be protected during shipment with a PVC film easily removable after installation. Glass mirror door shall be hung on full length 3/16" (5mm) dia stainless steel piano hinge and held closed by a tumbler lock keyed alike to other ASI washroom equipment. Dispensing slot shall have fully hemmed-in rolled edges for snag-free dispensing and user safety. Face trim shall be 1" (25mm) wide formed from one piece with no miters, welding or open seams and have 1/4" (6mm) square return to wall. Structural assembly of cabinet components shall be of welded construction.

Mod-U-Lav Station shall be Model N° 0017 as manufactured by American Specialties, Inc. 441 Saw Mill River Road Yonkers, New York 10701-4913

INSTALLATION

Unit is recessed into wall or partition using N° 10 self tapping screws (by others). For compliance with ADA Accessibility Guidelines, unit should be installed so that sink top is 34" (864mm) above finished floor. Unit is plumbed by others.

Rough Wall Opening (RWO) is..... 15-3/4"W x 54-1/2"H x 4-1/4"D (400mm x 1384mm x 108mm).

OPERATION

Towels are self-feeding until supply is depleted. Supplies are replenished manually on a cycle determined by maintenance needs.

OPTIONS

Optional configurations are available. See options sections of the Specifications Binder.

Accessory Specialties

AMERICAN DISPENSER

Desert Ray Products

WATROUS INC.