



AMERICAN SPECIALTIES, INC.

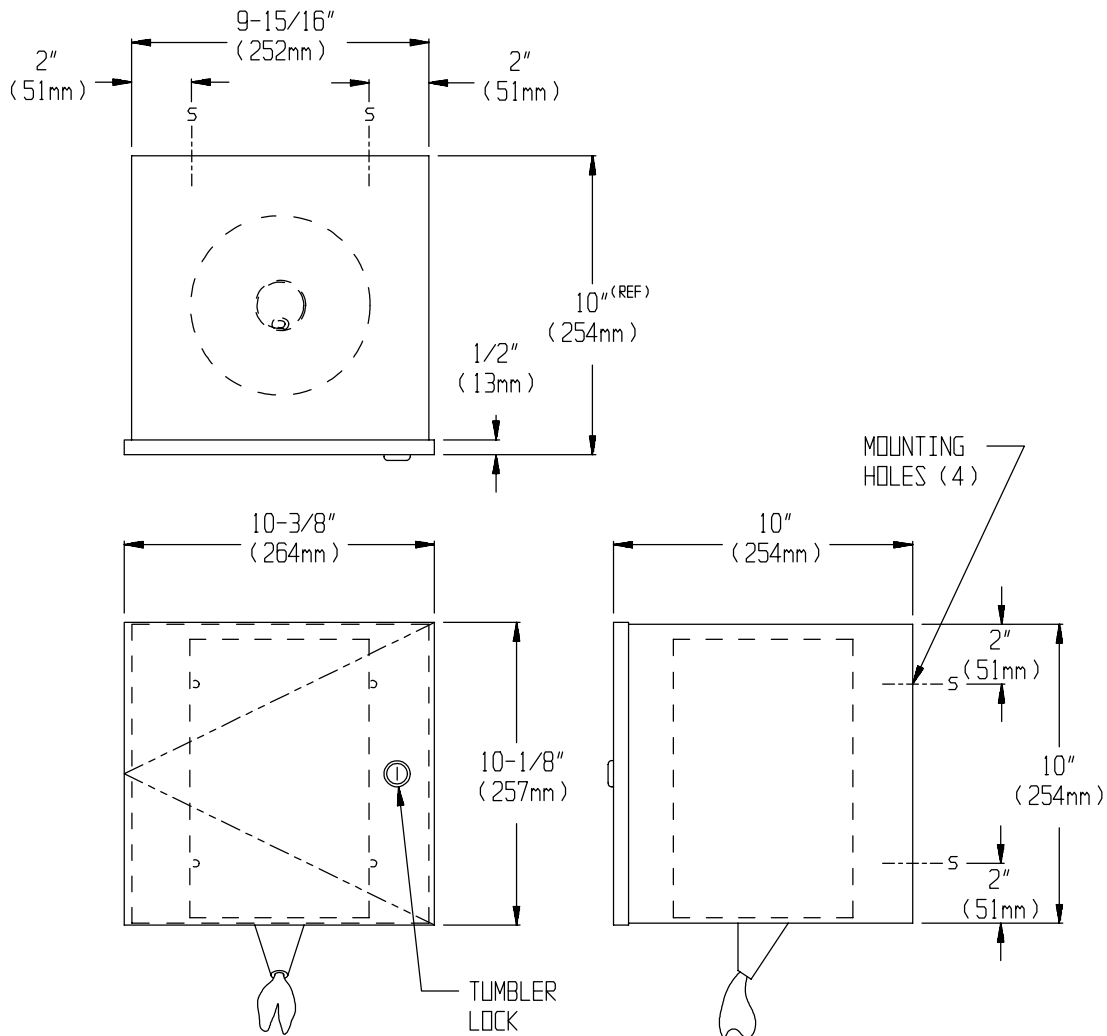
441 Saw Mill River Road, Yonkers, NY 10701 (914) 476-9000

MODEL No: 0450-MPCTD

ISSUED: 10-04

REVISED:

SURFACE MOUNTED PULL CORE PAPER TOWEL DISPENSER



SPECIFICATION

Surface Mounted Pull Core Paper Towel Dispenser shall accommodate one Pull Core paper towel roll. Cabinet and door shall be type 304, 18 gauge stainless steel. Structural assembly of all components shall be of welded construction. All exposed surfaces shall be N° 4 satin finish and be protected during shipment with a PVC film easily removable after installation. Door shall be hung on a heavy duty stainless steel piano hinge and shall be held closed by a tumbler lock keyed to other ASI washroom equipment. Dispensing mechanism shall be fabricated of high impact chemical and flame retardant ABS.

Surface Mounted Pull Core Paper Towel Dispenser shall be Model N° 0450-MPCTD as manufactured by American Specialties, Inc., 441 Saw Mill River Road, Yonkers, New York, 10701-4913.

INSTALLATION

Mount unit to wall using N° 10 self-tapping screws (by others) through concealed mounting holes provided. For compliance with ADA Accessibility Guidelines, unit should be installed so that Pull Core towel is 54" (1372mm) maximum above finished floor (AFF) if clear floor side reach access is provided or 48" (1219mm) maximum AFF if clear floor forward reach access only is provided.

OPERATION

Towels are pulled until supply is depleted. Towel feed length is determined by towel perforations.

Accessory Specialties

AMERICAN DISPENSER

Desert Ray Products

WATROUS INC.