



# AMERICAN SPECIALTIES, INC.

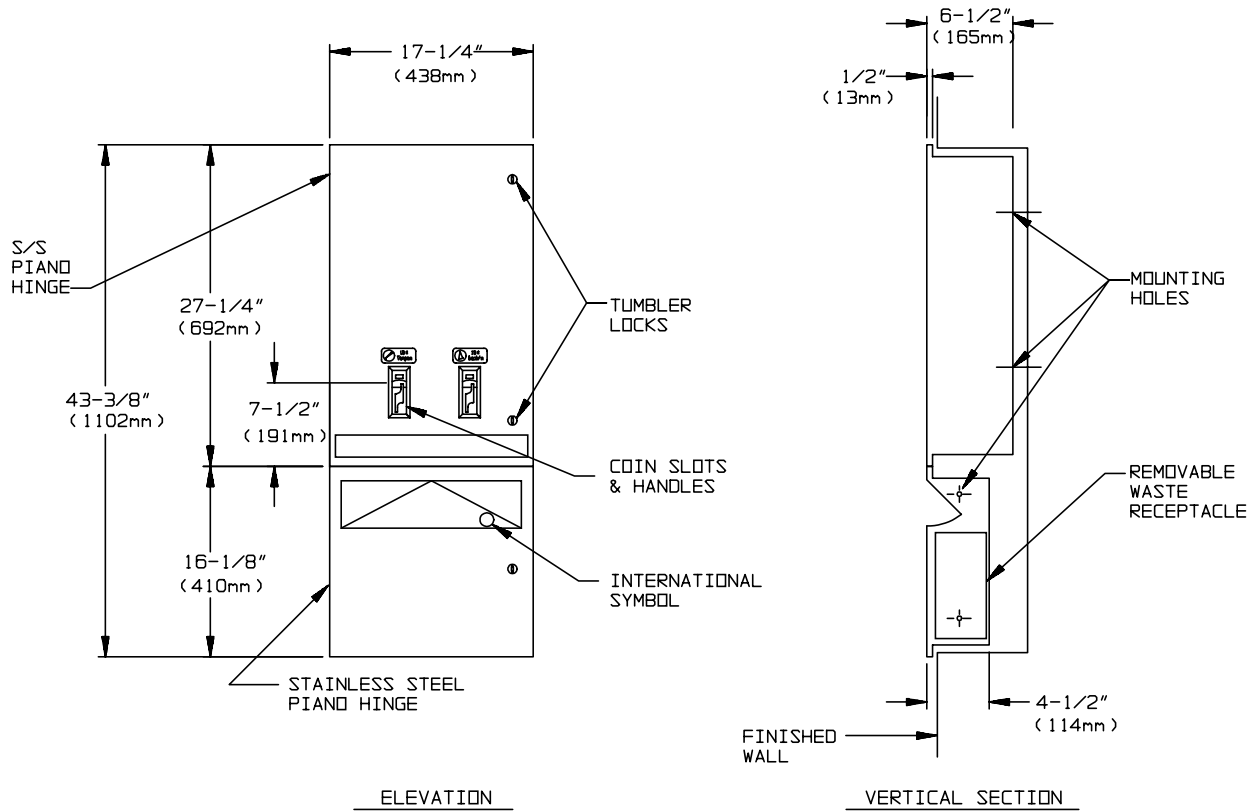
441 Saw Mill River Road, Yonkers, NY 10701 (914) 476-9000

MODEL No: 0468-TM

ISSUED: 1-87

REVISED: 9-04

## RECESSED DUAL SANITARY NAPKIN / TAMPON DISPENSER WITH WASTE RECEPTACLE (PAGE 1/2)



### SPECIFICATION

Recess Mounted Dual Sanitary Napkin & Tampon Dispenser and Waste Receptacle shall hold 30 napkins and 27 tampons of specified sizes and shall have a waste capacity of 1.9 gal (7.2 liters). Unit shall be fabricated of alloy 18-8 stainless steel, type 304, 18 gauge; all exposed surfaces shall have N° 4 satin finish and be protected during shipment by PVC film easily removable after installation. Cabinet door shall be attached to frame with a full length 3/16" dia. (5mm) stainless steel multi-staked piano hinge and shall be held closed with three (3) tumbler locks keyed alike to other ASI washroom equipment. Internal coin-box shall be keyed differently than door locks. Waste disposal door shall be attached to cabinet with a stainless steel spring hinge and have the international waste symbol on face. Waste container shall be fabricated of stainless steel same as above, 22 gauge. Dispensing mechanisms shall be fastener mounted internally to provide ability to change mechanisms for coinage denomination. Structural assembly of body and door components shall be of welded construction and have no exposed fasteners or welded seams. Weights for each feed track shall be supplied. Factory installed coin operation denomination shall be \_\_\_\_\_ (please fill in 25¢ or 50¢ or FREE ) and add denomination as suffix to model N° (ie: 0468-TM-25)).

**Recessed Mounted Dual Sanitary Napkin & Tampon Dispenser with Waste Receptacle shall be Model N° 0468-TM-xx as manufactured by American Specialties, Inc., 441 Saw Mill River Road, Yonkers, New York 10701-4913**

### INSTALLATION

Unit is mounted in wall recess using N° 10 self-tapping screws (by others). For maximum usability and compliance with ADA Accessibility Guidelines, unit should be installed so that coin slot is 54" (1372mm) maximum above finished floor (AFF) and bottom of waste receptacle door is 38" (965mm) minimum AFF. Note that coin slot is 22-7/16" (570mm) above bottom edge of RWO.

**Rough Wall Opening (RWO) required is.....16"W x 42"H x 6"D (406mm x 1067mm x 153mm).**

Accessory Specialties

AMERICAN DISPENSER

Desert Ray Products

WATROUS INC.



# AMERICAN SPECIALTIES, INC.

441 Saw Mill River Road, Yonkers, NY 10701 (914) 476-9000

MODEL No: 0468-TM

ISSUED: 1-87

REVISED: 9-04

## RECESSED DUAL SANITARY NAPKIN / TAMPON DISPENSER WITH WASTE RECEPTACLE (PAGE 2/2)

### OPERATION

Deposit of specified coin allows operation of dispenser. Napkin and tampon dispensers operate independently. Selected product drops into vending opening after operator actuation. Indicator displays empty condition and blocks coin slot when product is depleted. Unit vend product supply is replenished on cycle determined by maintenance needs by opening door and manually reloading product into dispenser supply tracks. Waste receptacle is emptied manually on cycle determined by maintenance needs. Locked compartment prevents unauthorized access. Track weights **MUST BE USED** to provide positive feed.

### **NAPKINS, SINGLES, CARDBOARD-BOXED, SEMIGLOSS FINISH; CAPACITY: 30, BOX SIZE: 4-1/4" x 3" x 1-1/8" (108mm x 76mm x 29mm)**

Stayfree	No. 4
Guards	No's. 247, or 147
Kotex	No's. 704, 707, 07010, 07040, 07045, 07300, 07320
Pure-Nat	No. M-4
Modess	No. 4

### **TAMPONS, CYLINDER, CARDBOARD, SEMIGLOSS, CRIMPED ENDS; CAPACITY: 27, TUBE SIZE: 3/4" dia. x 5-1/4" (19mm x 134mm)**

Tampax	
Modess Tampons	