



# AMERICAN SPECIALTIES, INC.

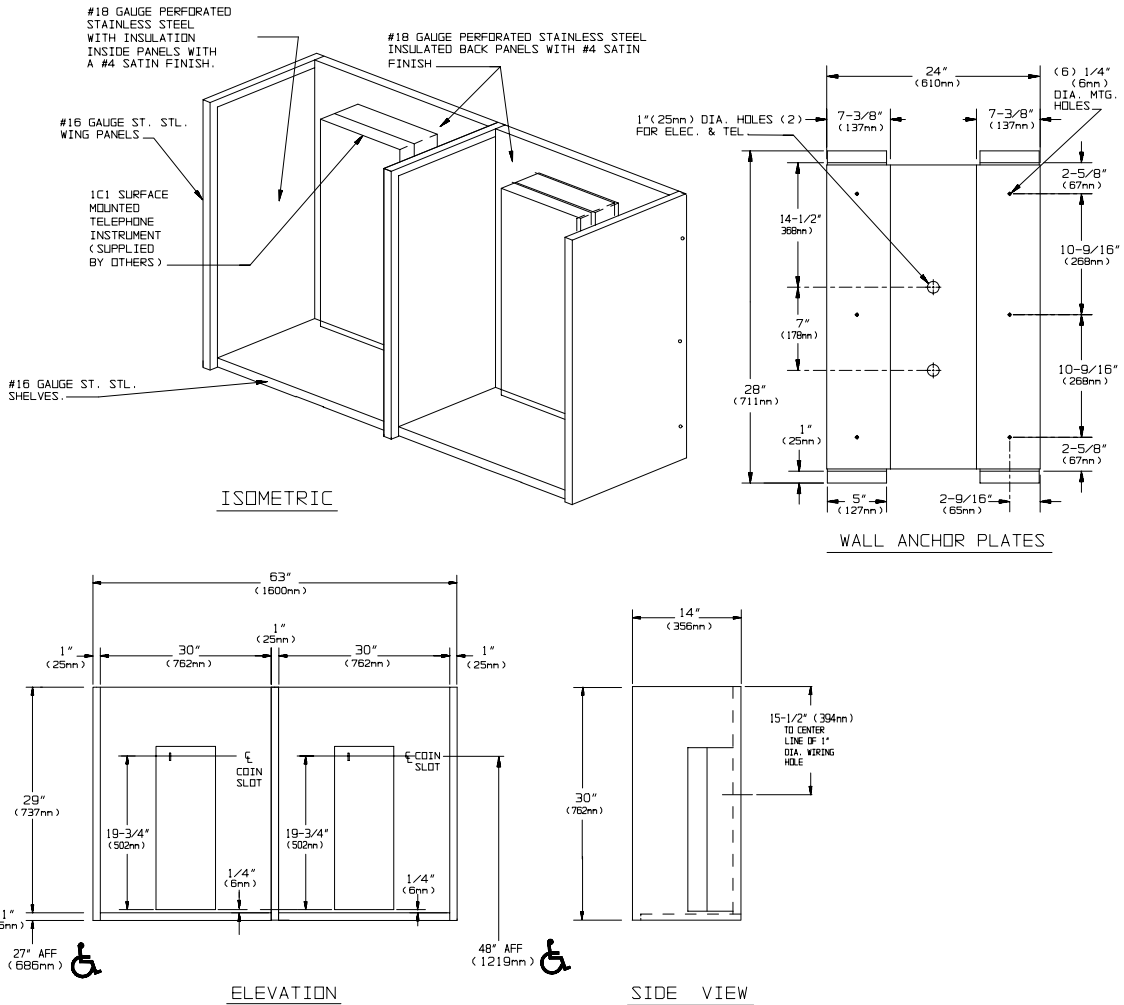
441 Saw Mill River Road, Yonkers, NY 10701 (914) 476-9000  
www.americanspecialties.com

MODEL No: 1305-021017-2

ISSUED: 12-05

REVISED: 6-06

## TWO-BAY ADAAG FRONT REACH COMPLIANT TELEPHONE ACCOMMODATION



### SPECIFICATION

Two-Bay unit with 30" (762mm) inside bay width and 48" (1219mm) Coin Slot Height {CSH} AFF for ADAAG compliant Front Reach Access shall have two Telephone Accommodations with a common divider, and shall have back panels fabricated of 18 gauge perforated stainless steel alloy 18-8 type 304. Exterior of wing panels shall be 16 gauge stainless steel and interior shall have 18 gauge perforated stainless steel with sound absorbing filler for sound control. All exposed surfaces shall have a N<sup>o</sup> 4 satin finish. Unit is prepared to accept standard N<sup>o</sup> IC1 surface mounted telephones (provided by others) onto concealed mounting plates. Unit shall have wall anchor plates and mounting brackets fabricated of 18 gauge paint-lok steel, which shall have six (6) 1/4" diameter (Ø6.4mm) mounting holes, two (2) 1" diameter (Ø25.4mm) wiring holes and hole-slots and tapped holes for standard telephone mounting at 48" (1219mm) MAX CSH.

**Two-Bay ADAAG Front Reach Compliant Telephone Accommodation shall be Tellette Model N<sup>o</sup> 1305-021017-2 as manufactured by American Specialties, Inc., 441 Saw Mill River Road, Yonkers, NY 10701-4913**

### INSTALLATION

Secure wall anchor plates to finished wall through six (6) mounting holes provided in each. Hang assembled booth onto wall anchor plates. Telephone instruments (supplied by others) are then set onto back of units and secured, making total assembly theft-resistant. Installer must furnish mounting hardware to suit wall construction. For compliance with ADA Accessibility Guidelines front reach access mount unit 48" (1219mm) MAX AFF to the centerline of coin slot. **Top of unit will be at 57" (1448) max AFF and bottom of shelf will be at 27" (686mm).**

Accessory Specialties

AMERICAN DISPENSER

Desert Ray Products

WATROUS INC.