



AMERICAN SPECIALTIES, INC.

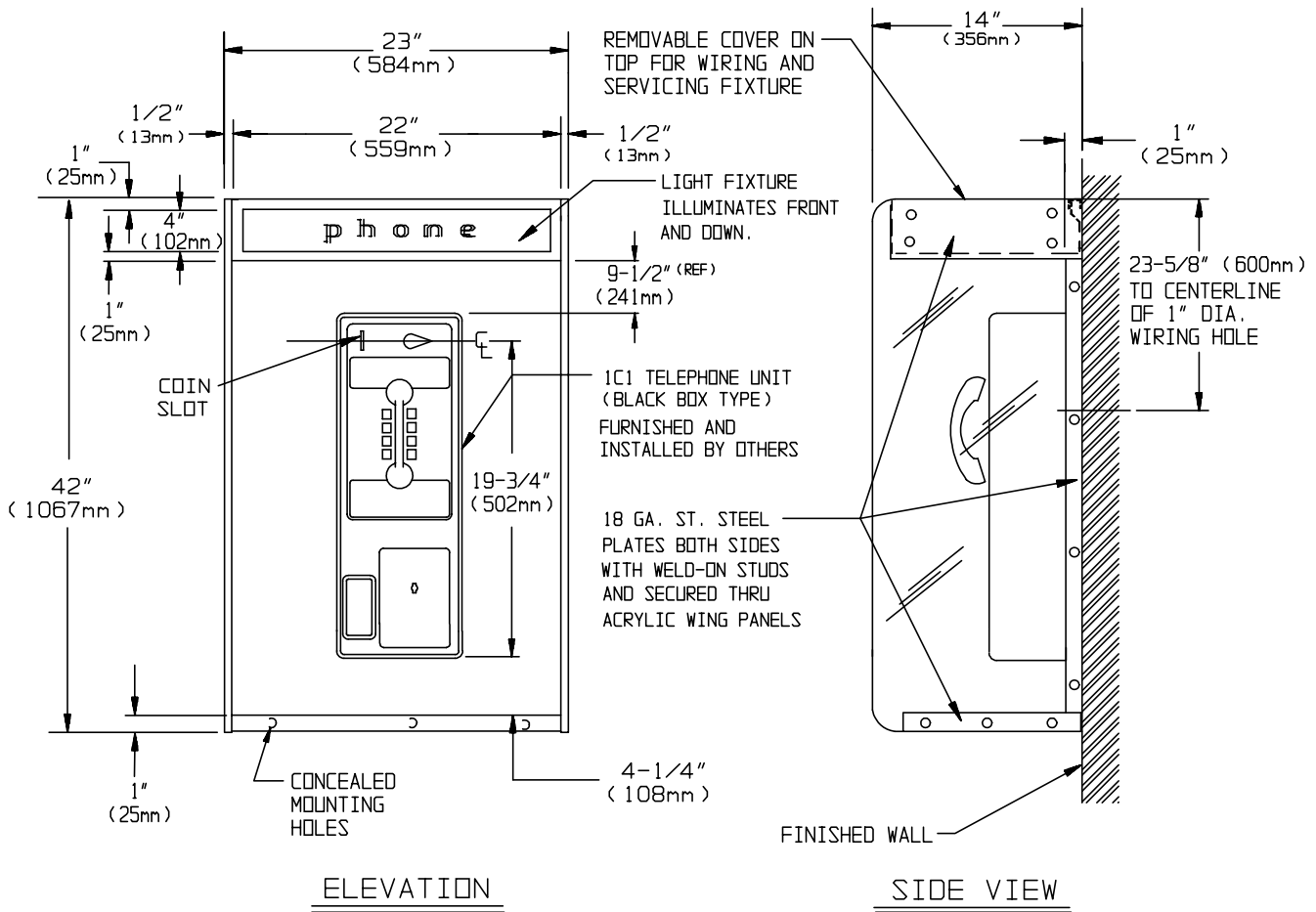
441 Saw Mill River Road, Yonkers, NY 10701 (914) 476-9000
www.americanspecialties.com

MODEL No: 1305-04C16

ISSUED: 1-87

REVISED: 6-06

TELEPHONE ACCOMMODATION WITH LIGHT FIXTURE AND CLEAR ACRYLIC WINGS



SPECIFICATION

Telephone Accommodation with Light Fixture shall have back panel fabricated of 18 gauge stainless steel alloy 18-8 type 304. Shelves and 1" (25.4mm) wide accent strips at each side shall be 16 gauge stainless steel. All exposed metal surfaces shall have a N° 4 satin finish. Wing panels shall be 1/2" (13mm) thick clear acrylic (standard). The top shall have a light fixture to be wired to a remote wall switch or breaker by others. The light shall illuminate down into booth and forward for diffuser with "PHONE" legend and shall have a removable top access panel for wiring and servicing lamp. Unit is prepared to accept standard N° 1C1 surface mounted telephone (provided by others) onto concealed mounting plate. Unit shall have wall anchor plate and mounting bracket fabricated of 18 gauge paint-lok steel, which shall have six (6) 1/4" diameter (Ø6.4mm) mounting holes, two (2) 1" diameter (Ø25.4mm) wiring holes and hole-slots and tapped holes for standard telephone mounting. For multiple installations [option -17-n] add 22-1/2" (572mm) to overall width for each additional telephone.

Telephone Accommodation with Light Fixture shall be Tellette Model N° 1305-04C16 as manufactured by American Specialties, 441 Saw Mill River Road, Yonkers, NY 10701-4913

INSTALLATION

Secure wall anchor plate to finished wall through six (6) mounting holes provided. Hang assembled booth onto wall anchor plate. Telephone instrument (supplied by others) is then set onto back of unit and secured, making total assembly theft-resistant. Installer must furnish mounting hardware to suit wall construction. Light fixture to be wired to remote wall switch or breaker by others is supplied with pig tail leads. Suggested mounting height for general utility is 82" (2083mm) AFF to the top of unit to place coin slot at 65" (1651mm) AFF. For compliance with ADA Accessibility Guidelines side reach access mount unit 54" (1372mm) MAX AFF to the centerline of coin slot, by installing unit with top at 71" (1803) MAX AFF.

Accessory Specialties

AMERICAN DISPENSER

Desert Ray Products

WATROUS INC.