



# AMERICAN SPECIALTIES, INC.

441 Saw Mill River Road, Yonkers, NY 10701 (914) 476-9000  
www.americanspecialties.com

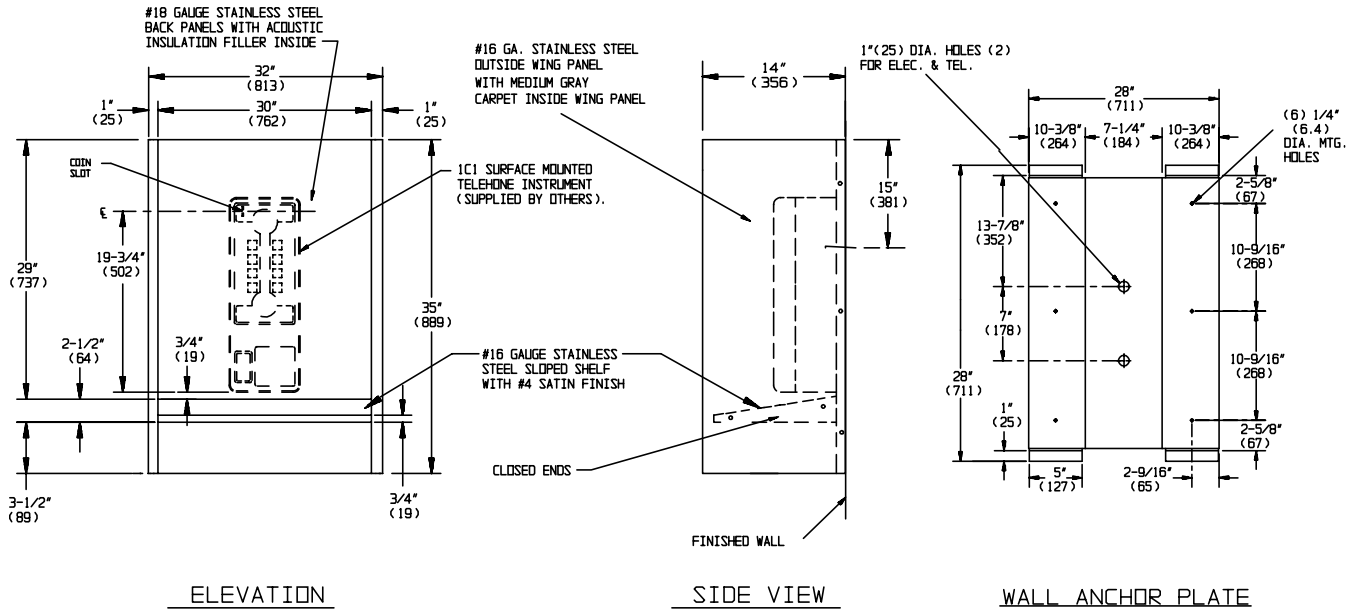
MODEL No: 1305-1012

ISSUED: 1-87

REVISED: 9-06

## TELEPHONE ACCOMMODATION FOR ADAAG FRONT REACH ACCESS COMPLIANCE WITH SLOPED SHELF

NOTE:  
ALL DIMENSIONS ARE IN INCHES (millimeters)



### SPECIFICATION

Telephone Accommodation for ADAAG Front Reach Access Compliance with Sloped Shelf shall have back panel fabricated of 18 gauge stainless steel alloy 18-8 type 304. Shelf and wing panels exterior shall be 16 gauge stainless steel and wing panels shall have medium gray industrial carpet on the inside surface for sound control. All exposed surfaces shall have a N<sup>o</sup> 4 satin finish. Unit is prepared to accept standard N<sup>o</sup> 1C1 surface mounted telephone (provided by others) onto concealed mounting plate. Unit shall have wall anchor plate and mounting bracket fabricated of 18 gauge paint-lok steel, which shall have six (6) 1/4" diameter (Ø6.4mm) mounting holes, two (2) 1" diameter (Ø25.4mm) wiring holes and hole-slots and 1/4-20 tapped holes for standard telephone mounting at 48" (1219mm) maximum coin slot centerline height.

**Telephone Accommodation for ADAAG Front Reach Access Compliance with Sloped Shelf shall be Tellette Model N<sup>o</sup> 1305-1012 as manufactured by American Specialties, Inc., 441 Saw Mill River Road, Yonkers, NY 10701-4913.**

### INSTALLATION

Secure wall anchor plate to finished wall through six (6) mounting holes provided. Installer must furnish mounting hardware to suit wall construction. Hang assembled booth onto wall anchor plate. Telephone instrument (supplied by others) is then set onto back of unit and secured, making total assembly theft-resistant. For compliance with ADA Accessibility Guidelines front reach access mount unit 48" (1219mm) MAX AFF to the centerline of coin slot, by installing unit with top at 56-1/2" (1435mm) MAX AFF. Bottom of shelf will be 25" (635mm) MAX AFF and bottom edges of side panels will be 21-1/2" (546mm) MAX AFF.