



AMERICAN SPECIALTIES, INC.

441 Saw Mill River Road, Yonkers, NY 10701 (914) 476-9000
www.americanspecialties.com

MODEL No: 1516-SEC-P/PED

ISSUED: 12-05

REVISED: 9-06

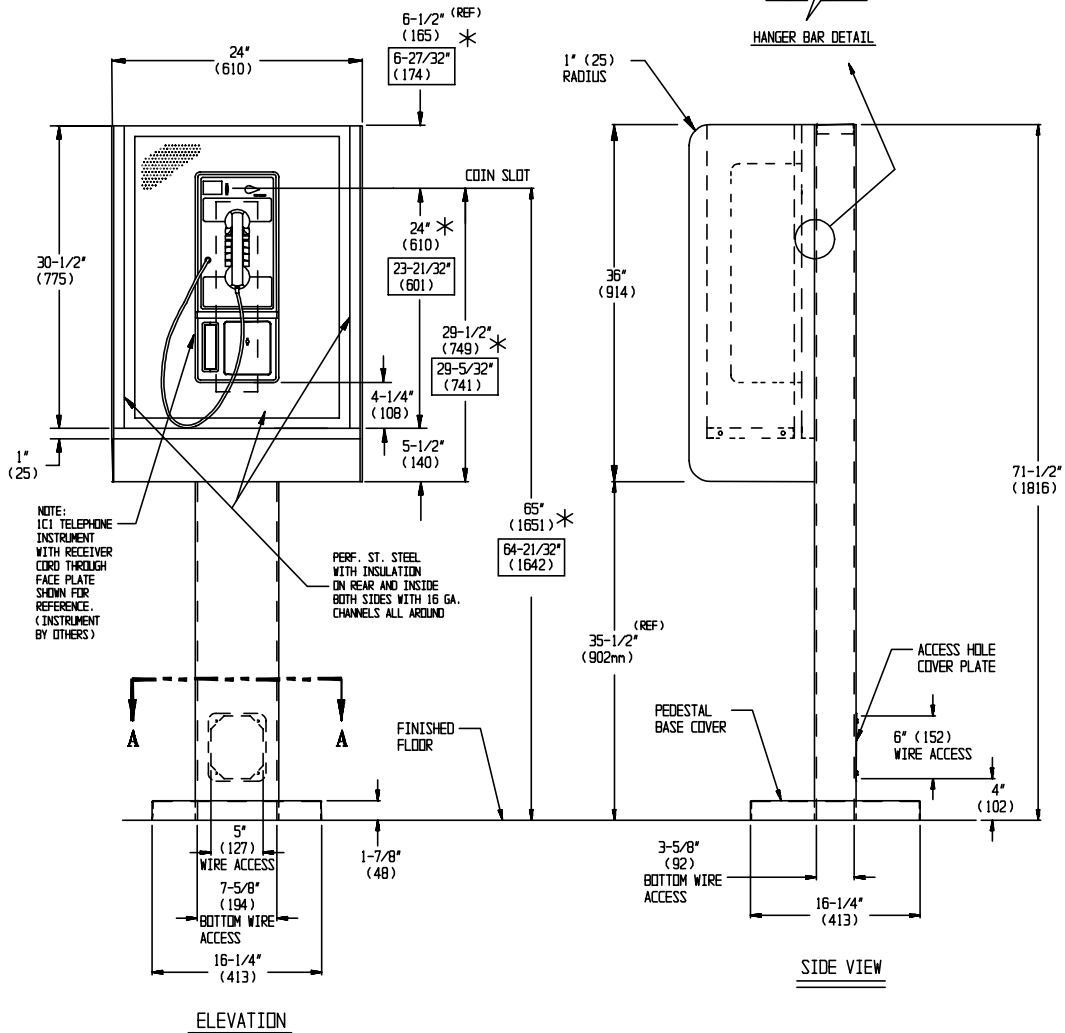
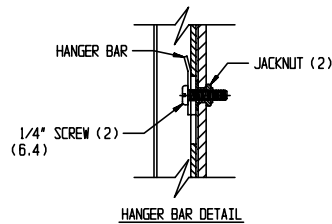
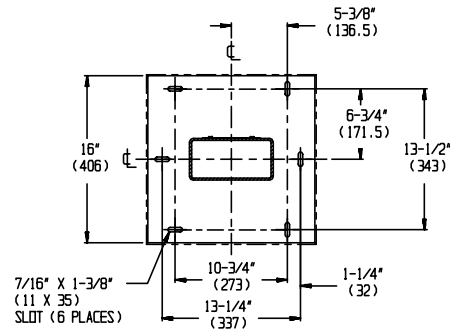
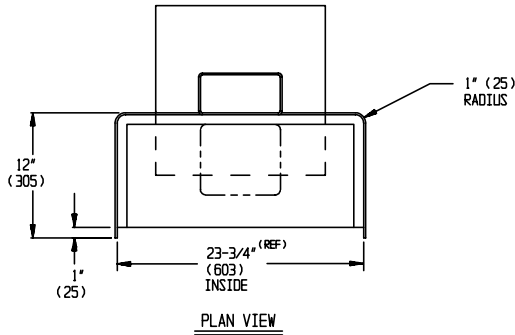
SECURITY TELEPHONE ACCOMMODATION WITH WRITING SHELF AND PEDESTAL COLUMN (pg 1/2)

NOTES:

ALL DIMENSIONS ARE IN INCHES (millimeters).

* MAIN DIMENSIONS FOR MILLENNIUM® PHONE.

* BOX DIMENSIONS FOR IC1 PHONE.





AMERICAN SPECIALTIES, INC.

441 Saw Mill River Road, Yonkers, NY 10701 (914) 476-9000
www.americanspecialties.com

MODEL No: 1516-SEC-P/PED

ISSUED: 12-05

REVISED: 9-06

SECURITY TELEPHONE ACCOMMODATION WITH WRITING SHELF AND PEDESTAL COLUMN (pg 1/2)

SPECIFICATION

Telephone Accommodation with Writing Shelf and Pedestal Column shall have Security Series Tellette 1516-P fabricated of alloy 18-8 stainless steel type 304 for column mounting. One-piece surround shall be 1/8" (3.2mm) stainless steel. Shelf shall be 16 gauge with removable closure plate on bottom and all shall be held in place with pin Torx® security button head screws. Side and back acoustic panels shall be 1" thick of 18 gauge perforated and 16 gauge N° 4 satin finish stainless steel with acoustic insulation filler inside for sound absorption, mounted into unit with concealed latch cleats and pin Torx® security socket head screws. Concealed mounting holes shall be provided in area behind telephone instrument, [either a surface mounted standard N° 1C1 telephone or a Millennium® unit (both provided by others)], comprised of a 1-1/2" diameter (Ø38mm) hole for electrical and telephone wire entry; keyhole slots and 1/4-20 tapped holes for standard telephone mounting at 65" (1651mm) Coin Slot Height AFF for the Millennium® unit and 64-21/32" (1642mm) Coin Slot Height AFF for the N° 1C1 telephone. Unit is provided with a pedestal column painted black fabricated of CRS A500 with 3/16" (4.8mm) wall thickness and section size of 4" x 8" (102mm x 203mm). Column is welded to 1-7/8" (48mm) thick fabricated base plate with (6) mounting slots for 3/8" (9.5mm) bolts for floor connection. Column shall have access for telephone and electric power wires coming up from bottom through cutout in base center. Column is provided with base cover plate and column side access port cover plate, both fabricated of 16 gauge alloy 18-8 stainless steel type 304 with N° 4 satin finish and held closed with N° 10-32 pin Torx® security button head screws. Top of column shall be closed.

Telephone Accommodation with Shelf and Pedestal Column shall be Model N° 1516-SEC-P/PED as manufactured by American Specialties, Inc., 441 Saw Mill River Road, Yonkers, NY 10701-4913

INSTALLATION

Secure pedestal column to floor through mounting holes provided in base plate. Installer must furnish leveling materials, mounting hardware and anchors for connection of base plate to floor. Ensure unit is level and plumb before installing base cover and bolting telephone booth enclosure to pedestal. Service cables should be pulled through base center hole and left coiled inside column behind access panel. Hang telephone booth enclosure onto column hanger bracket. Bolt booth to column with six (6) 1/4-20 bolts through holes provided in booth back wall into tapped holes provided in column. Set telephone unit (by others) into booth to hang studs in keyhole slots provided. Secure telephone (by others) onto back of unit through any or all of seven (7) mounting holes into 1/4-20 tapped holes provided in concealed mounting plate. Pull wires up from column through telephone wiring hole and then hookup and close unit, making entire assembly theft and vandal resistant.