



# AMERICAN SPECIALTIES, INC.

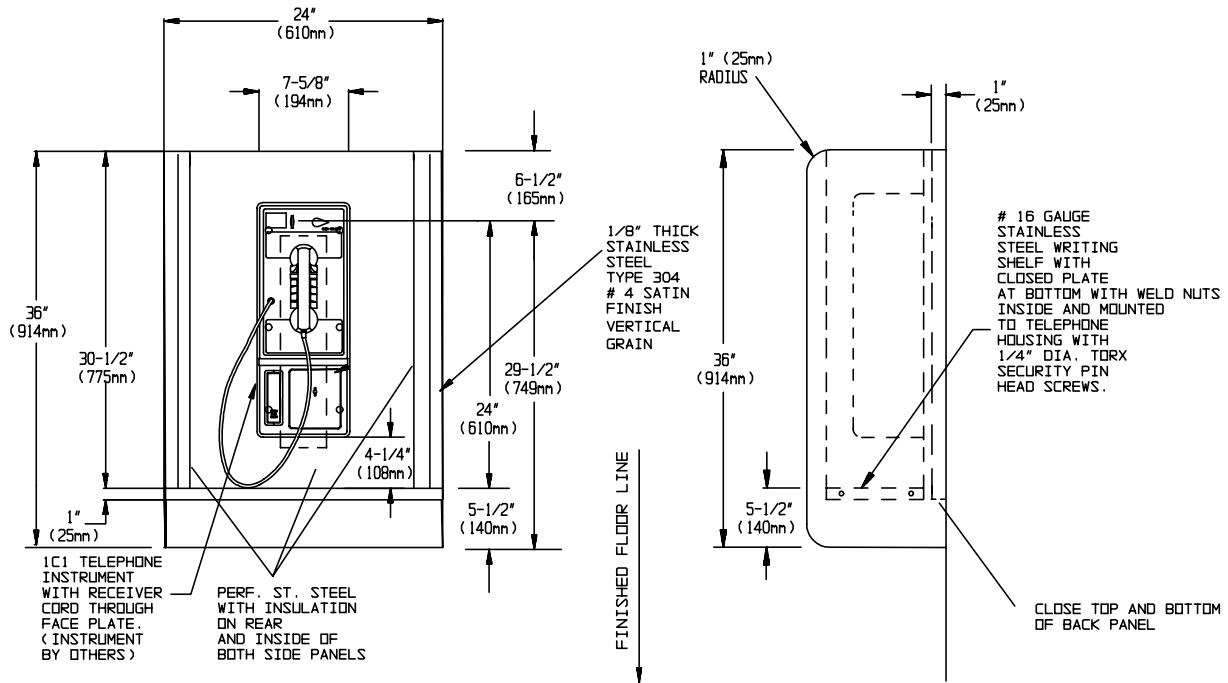
441 Saw Mill River Road, Yonkers, NY 10701 (914) 476-9000

MODEL No: 1516-SEC-P

ISSUED: 1-96

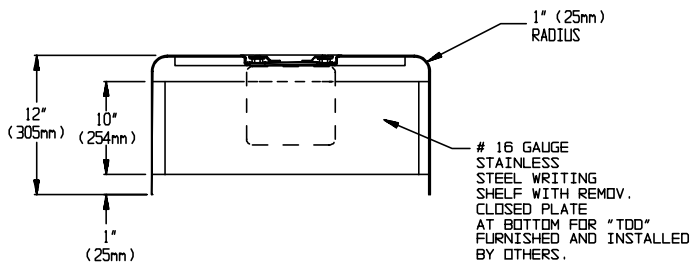
REVISED: 3-04

## TELEPHONE BOOTH WITH WRITING SHELF



ELEVATION

SIDE VIEW



PLAN VIEW

### SPECIFICATION

Telephone Booth with Writing Shelf shall be fabricated of alloy 18-8 stainless steel type 304. One piece surround shall be 1/8" (3.2mm) stainless steel. Shelf shall be 16 gauge with removable closure plate on bottom held in place with pin torx security button head screws. Sides and back panel shall be 1" thick perforated stainless steel with acoustic insulation filler inside for sound absorption. Concealed mounting holes shall be provided in area under telephone, [two (2) 1" (25mm) dia. holes for electrical and telephone wire entry; key hole slots and 1/4-20 tapped holes for standard telephone mounting].

**Telephone Booth with Writing Shelf shall be Model N°1516-SEC-P as manufactured by American Specialties, Inc., 441 Saw Mill River Road, Yonkers, NY 10701-4913**

### INSTALLATION

Secure on wall through mounting holes provided. Set telephone instrument (supplied by others) onto back of unit and secure it to mounting holes provided. Installer to furnish mounting hardware to suit wall construction. For compliance with ADA Accessibility Guidelines, side reach access, mount unit 54" (1372mm) maximum above finished floor (AFF) to the centerline of coin slot. For general utility mount unit 40" (1016mm) max. AFF to the bottom of shelf.

Accessory Specialties

AMERICAN DISPENSER

Desert Ray Products

WATROUS INC.