



AMERICAN SPECIALTIES, INC.

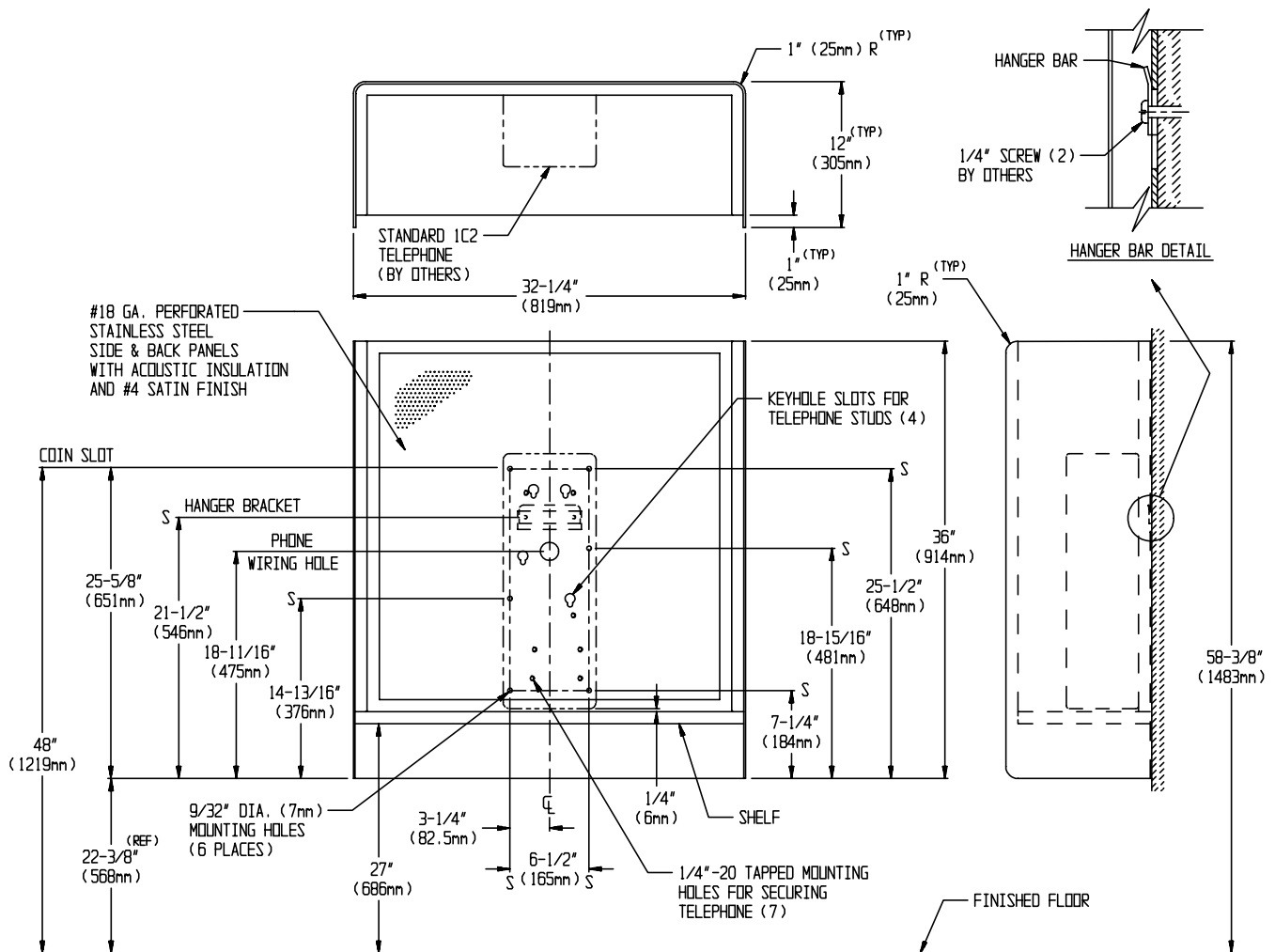
441 Saw Mill River Road, Yonkers, NY 10701 (914) 476-9000
www.americanspecialties.com

MODEL No: 1516-SEC-P3048

ISSUED: 1-96

REVISED: 9-06

SECURITY TELEPHONE ACCOMMODATION WITH WRITING SHELF FOR ADAAG FRONT REACH ACCESS COMPLIANCE



SPECIFICATION

Security Telephone Accommodation with Writing Shelf for ADAAG Front Reach Access Compliance shall be fabricated of stainless steel alloy 18-8 type 304. One-piece surround shall be 1/8" (3.2mm) thick stainless steel. Shelf shall be 16 gauge stainless steel with removable closure plate on bottom held in place with pin-Torx® security button head screws. Sides and back shall have 18 gauge perforated stainless steel interior 1" thick with acoustic insulation filler inside for sound control. All exposed surfaces shall have a N° 4 satin finish. Unit is prepared to accept either a surface mounted standard N° 1C1 telephone or a Millennium® unit (both provided by others) onto concealed mounting plate, which shall have a 1-1/2" diameter (Ø38mm) wiring hole and hole-slots and 1/4-20 tapped holes for telephone mounting at 48" (1219mm) maximum coin slot height.

Security Telephone Accommodation with Writing Shelf for ADAAG Front Reach Access Compliance shall be Tellette Model N° 1516-SEC-P3048 as manufactured by American Specialties Inc., 441 Saw Mill River Road, Yonkers, NY 10701-4913

INSTALLATION

Secure hanger bracket to finished wall through two (2) mounting holes provided. Hang assembled booth onto hanger bracket. Secure booth to finished wall through six (6) mounting holes provided in concealed mounting plate. Installer must furnish mounting hardware to suit wall construction. Set telephone instrument (supplied by others) onto back of unit and secure it to 1/4-20 tapped mounting holes provided in concealed mounting plate, making total assembly theft-resistant. For compliance with ADA Accessibility Guidelines front reach access mount unit 48" (1219mm) MAX AFF to the coin slot centerline. **Unit top will be at 58-3/8" (1483) max AFF and shelf bottom will be at 27" (686mm).**

Accessory Specialties

AMERICAN DISPENSER

Desert Ray Products

WATROUS inc.