



AMERICAN SPECIALTIES, INC.

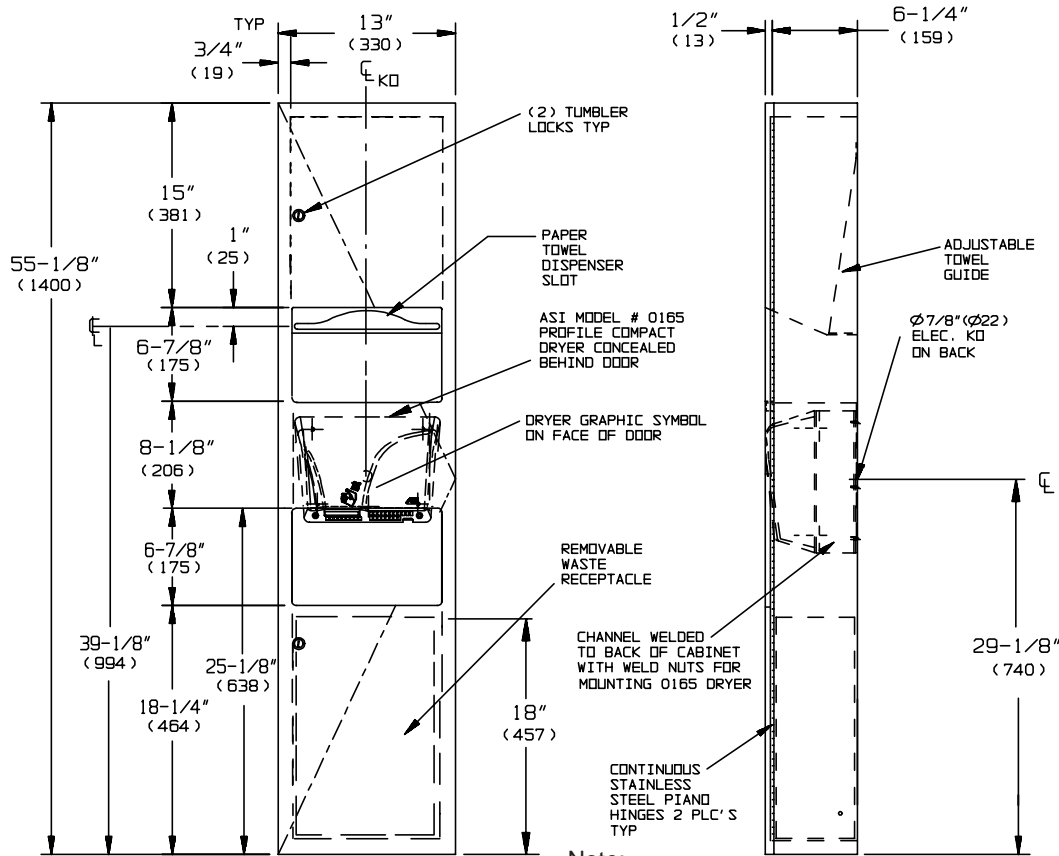
441 Saw Mill River Road, Yonkers, NY 10701 (914) 476-9000
www.americanspecialties.com

MODEL No: 64673-9

ISSUED: 8-07

REVISED:

SURFACE MOUNTED COMBO THREE-IN-ONE PAPER TOWEL DISPENSER WITH WASTE RECEPTACLE AND AUTOMATIC ELECTRIC HAND DRYER (pg 1/2)



Note:
Dimensions are
in inches and
(millimeters)

SPECIFICATION

Surface Mounted Combo Three-in-One Paper Towel Dispenser with Waste Receptacle and Automatic Electric Hand Dryer shall hold and dispense 800 standard multi-fold or 600 standard C-fold or 1100 standard single fold paper towels and shall have a waste capacity of 5.28 gal (20 liters). An adjustable guide shall be provided to allow dispensing of single-fold, multi-fold or C-fold paper towels. Cabinet, door, dispenser, waste receptacle and collar shall be fabricated from type 304 stainless steel alloy 18-8. All exposed surfaces shall have a N° 4 satin finish and shall be protected during shipment by PVC film easily removable after installation. Cabinet shall be 20 gauge with a 1" (25.4) wide perimeter trim to lay flush against wall and shall have no exposed fastening devices or visible seams. Full-face door shall be 18 gauge, fabricated from one piece with no miters or seams on face and shall have 1/2" (13) square returns to the wall. Door shall be attached to cabinet body with a full length 3/16" diameter (Ø4.8) stainless steel multi-staked piano hinge and shall be held closed with two (2) tumbler locks keyed alike to other ASI washroom equipment. Towel dispensing slot shall have a fully hemmed-in rolled edge for snag-free dispensing and user safety. Waste container shall have hemmed edges for safety. Structural assembly of all cabinet components shall be of welded construction. Unit shall be provided with a slide-on 22 gauge surface mounting collar (code-9). Hand Dryer shall operate automatically from IR sensor that shall activate dryer when hands are placed in sensor zone. Motor and heating element shall have internal resetting automatic thermal protection. Cover shall be fabricated of one-piece, heavy-duty cast aluminum 7/64" (2.8) thick, and shall have all exposed surfaces finished with acid, chip and scratch resistant epoxy enamel. Fixed directional air vanes shall be heavy duty, rust proof and tamper resistant. Air intake slots shall not allow access to internal parts. Back plate shall be furnished with vibration isolating mounting bushings. Circuitry shall have self-adjusting time-out and fail-safe off protection controlled by a microprocessor that shall detect and reject false signals and shall automatically self calibrate to provide uniform sensitivity over its entire life span. Entire unit shall be internally electrically grounded. Dryer unit shall have cULus approval and be listed under the re-examination services of Underwriters Laboratories, Inc. Unit shall be warranted against defects in materials or workmanship for Ten (10) years.

Accessory Specialties

AMERICAN DISPENSER

Desert Ray Products

WATROUS INC.



AMERICAN SPECIALTIES, INC.

441 Saw Mill River Road, Yonkers, NY 10701 (914) 476-9000
www.americanspecialties.com

MODEL No: 64673-9

ISSUED: 8-07

REVISED:

SURFACE MOUNTED COMBO THREE-IN-ONE PAPER TOWEL DISPENSER WITH (pg 2/2) WASTE RECEPTACLE AND AUTOMATIC ELECTRIC HAND DRYER

Surface Mounted Combo Three-in-One Paper Towel Dispenser with Waste Receptacle and Automatic Electric Hand Dryer shall be Model № 64673-9 as manufactured by American Specialties, Inc., 441 Saw Mill River Road, Yonkers, New York, 10701-4913

INSTALLATION

Unit is mounted on wall using № 10 self-tapping screws (by others) through concealed mounting holes provided into suitable blocking or anchors provided by others. Recommended mounting height of 55" (1397) to centerline of towel dispenser slot requires top of unit to be 71" (1803) AFF. See unit diagram for electrical service cable rough-in location. Electric service of 100-240VAC 20A 50/60 Hz (provided by others) is brought to RWO at location indicated on diagram above and is hooked up (by others) in accordance with schematic and Owner's Manual provided with unit. Dryer is mounted to chassis wiring box with four (4) 1/4-20 pan head screws (provided) through bushings in heavy-duty back plate. Electrical service is connected (by Electrician) prior to installing cover. Cover is secured to back plate with recessed socket-cap-head tamper-resistant pin-hex bolts (supplied) with security pin-hex driver (supplied). For compliance with ADA Accessibility Guidelines, install unit so that centerline of towel dispenser slot is 48" (1219) maximum above finished floor (MAX AFF).

OPERATION

Paper towels are manually withdrawn through dispensing slot. A towel adapter ensures that towels feed properly until depleted. Unit will continue to feed towels properly when reloaded with a partial load in place. User activates dryer by placing hands in the sensor zone indicated by graphic on door. Drying time is automatically initiated as long as movement is sensed up to a maximum of two (2) minutes to prevent accidental hold-on. Dryer automatically shuts off after time-out when hands are removed from the sensor zone. Refill dispenser by unlocking door and replacing towels for an empty or partially empty unit. Dispenser supply is replenished and waste container is emptied manually on cycles determined by maintenance needs. Locking full-face door over compartments prevents unauthorized access or removal.

DRYER RATINGS

MODEL	TYPE	DRYING TIME	VOLTS @ 50/60 Hz	AMPS	WATTS	COLOR
0165	Fixed vanes for hands	Automatic	115VAC	14.4	1653	White
			208VAC	13	1352	
			240VAC	15	1800	

AIR SPEED	MOTOR	H/P	RPM	FAN TYPE	AIR FLOW	HEATING ELEMENT	OUTPUT AIR TEMPERATURE
115 $\frac{ft}{s}$ [78 $\frac{m}{h}$] (35 $\frac{m}{s}$ [126 $\frac{km}{h}$])	Brush Type Dual Ball Bearings with 221° F (105° C) auto reset circuit breaker	1/4	7500	Single Inlet Centrifugal	180 CFM (306 m ³ /h)	Nichrome wire with 149° F (65° C) auto reset circuit breaker	140° F (60° C) @ 77° F (25° C) ambient room temperature