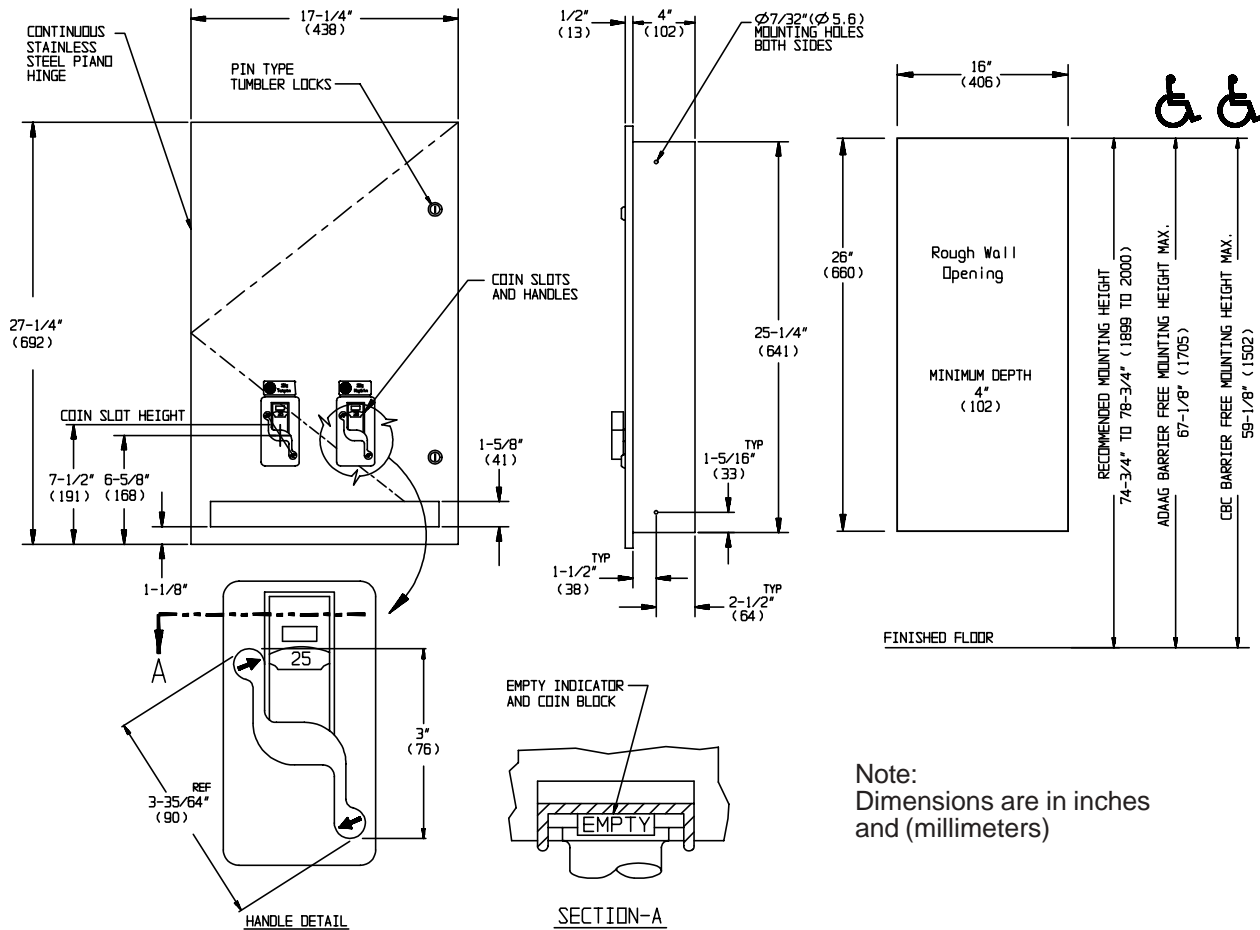




RECESSED DUAL SANITARY NAPKIN AND TAMPON DISPENSER (PAGE 1/2)



Note:
 Dimensions are in inches
 and (millimeters)

SPECIFICATION

Recessed Dual Sanitary Napkin & Tampon Dispenser for ADAAG Compliance shall hold 15 napkins and 23 tampons of specified sizes. Full face door shall be fabricated of 18 gauge stainless steel type 304 alloy 18-8, and shall be attached to cabinet with a full length 3/16" diameter (Ø4.8) stainless steel multi-staked piano hinge and shall be held closed with two (2) tumbler locks keyed alike to other ASI washroom equipment and two (2) keys shall be provided. Cabinet shall be fabricated of 20 gauge same grade stainless steel. All exposed surfaces shall have a N° 4 satin finish and shall be protected during shipment with PVC film easily removable after installation. Internal coin-box shall be keyed differently than door locks and two (2) keys shall be provided. Dispensing mechanisms shall be fastener mounted internally and shall be changeable for coinage denomination. Mechanisms shall have "S-handles" for ADAAG and ICC/ANSI A-117.1 compliance to provide operation with a force less than 5lbs (22.2N) requiring only one (1) hand and with no tight grasping, pinching or twisting of the wrist required. Structural assembly of body and door components shall be of welded construction and shall have no exposed fasteners or welded seams. A weight shall be supplied for each feed track to ensure even product dispensing. Factory installed coin operation denomination shall be _____ (please fill in 25¢ or 50¢ or FREE) and add denomination as suffix to model N° (e.g. 64684-H-25).

Recessed Dual Sanitary Napkin & Tampon Dispenser shall be Model N° 64684-H-xx as manufactured by American Specialties, Inc., 441 Saw Mill River Road, Yonkers, New York 10701-4913

INSTALLATION

Mount unit in wall recess using N° 10 self-tapping screws (by others). For compliance with ADA Accessibility Guidelines, install unit so that coin slot is 48" (1219) maximum above finished floor (MAX AFF). Be aware that some local codes (e.g. California, CBC) may require CSH to be 40" (1016) MAX AFF. Note that coin slot is 6-7/8" (175) above bottom edge of RWO, and bottom flange is 5/8" (16) below bottom edge of RWO.

Rough Wall Opening (RWO) required is 16" W x 26" H x 4-1/4" D (406 x 660 x 108)

**AMERICAN SPECIALTIES, INC.**441 Saw Mill River Road, Yonkers, NY 10701 (914) 476-9000
www.americanspecialties.com

MODEL No: 64684-H

ISSUED: 5-07

REVISED:

RECESSED DUAL SANITARY NAPKIN AND TAMPON DISPENSER (PAGE 2/2)**OPERATION**

Deposit of specified coin allows operation of dispenser. Napkin and tampon dispensers operate independently. Selected product drops into vending opening after operator actuation. Indicator displays empty condition and blocks coin slot when product is depleted. Vendor product supply is replenished on cycle determined by maintenance needs by opening door and manually reloading product into dispenser supply tracks. Track weights **MUST BE USED** to provide positive feed. Coins are emptied from locked collection box on a cycle determined by owner needs and requires key different than door key.

NAPKINS, SINGLES, CARDBOARD-BOXED, SEMIGLOSS FINISH; CAPACITY: 15,
BOX SIZE: 4-1/4" x 3" x 1-1/8" (108 x 76 x 29)

Stayfree	Nº 4
Guards	Nºs 247, or 147
Kotex	Nºs 704,707,07010, 07040, 07045, 07300, 07320
Pure-Nat	Nº M-4
Modess	Nº 4

TAMPONS, CYLINDER, CARDBOARD, SEMIGLOSS, CRIMPED ENDS; CAPACITY: 23
TUBE SIZE: 3/4" diameter x 5-1/4" long (Ø19 x 134)

Tampax	
Modess Tampons	