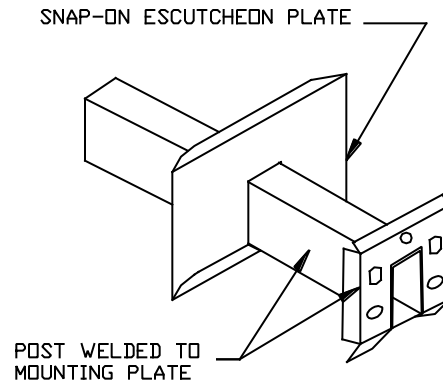
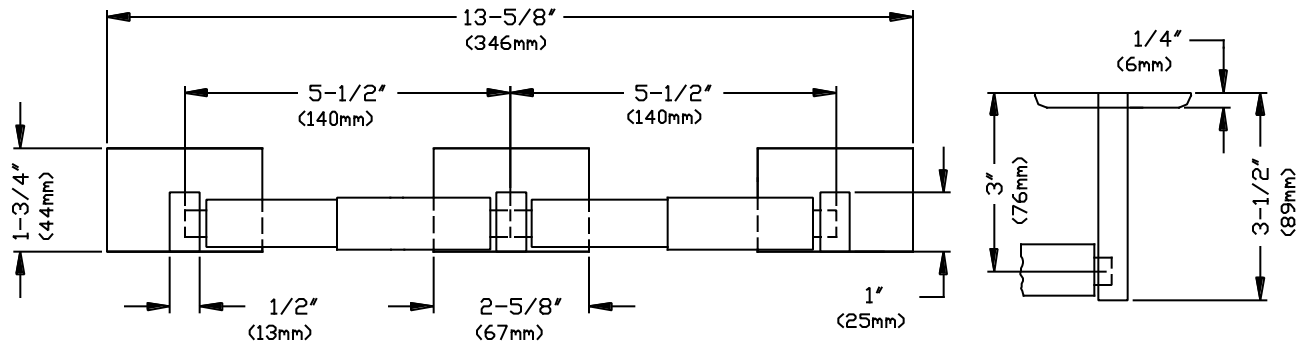




**AMERICAN SPECIALTIES, INC.**  
441 Saw Mill River Road, Yonkers, NY 10701 (914) 476-9000

MODEL No:	7705-2
ISSUED:	1-87
REVISED:	3-97

### DUAL ROLL TOILET PAPER HOLDER UNIT



#### SPECIFICATION

Dual Roll Toilet Paper Holder Unit shall be fabricated of alloy 18-8 stainless steel, type 304. Support posts shall be fabricated of 1/2" x 1" (13mm x 25mm) N<sup>o</sup>20 gauge rectangular tubes. Snap-on escutcheon plates shall be N<sup>o</sup>22 gauge as supplied. N<sup>o</sup>18 gauge mounting plates shall be welded to end of posts. Rollers shall be fabricated of high impact-resistant ABS plastic and two (2) shall be supplied. Surface finish shall be bright or N<sup>o</sup>4 satin as chosen by option.

Dual Roll Toilet Paper Holder Unit shall be Model N<sup>o</sup> 7705-2B (or N<sup>o</sup>7705-2S) as fabricated by American Specialties, Inc. 441 Saw Mill River Road, Yonkers, New York 10701- 4913

#### INSTALLATION

Unit is surface mounted on wall or partition using N<sup>o</sup>10 self tapping screws (supplied) through holes provided in mounting plates on support brackets. Escutcheon plates are snapped on to mounting plate to conceal fasteners. Roller is loaded and snapped into receiver holes in support posts. For compliance with ADA Accessibility Guidelines the unit should be installed so that the center line of the rollers is 19" (483mm) min. above finished floor (AFF) to 44" (1118mm) max. AFF and forward edge of roll no further than 36" (914mm) from back wall behind commode.

#### OPERATION

Tissues are self-feeding on user-pull demand until supply is depleted. Rollers are spring-loaded in support posts and are free-rolling.

#### OPTIONS AVAILABLE

Optional finish must be specified as either bright or satin. Specify finish by adding code suffixes to model number (i.e. 7705-2B or 7705-2S). Finish code suffix option -B = bright; option -S= satin.

Accessory Specialties

AMERICAN DISPENSER

Desert Ray Products

WATROUS INC.