



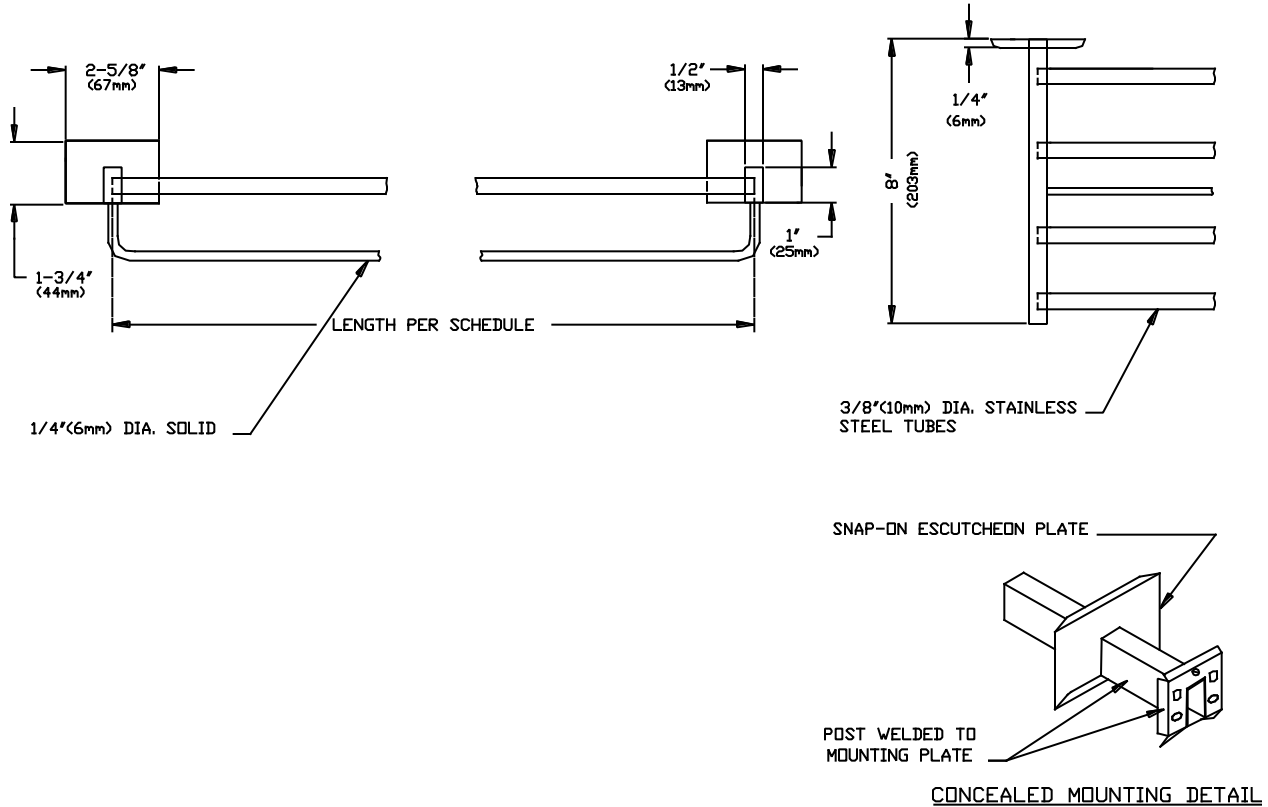
AMERICAN SPECIALTIES, INC.
 441 Saw Mill River Road, Yonkers, NY 10701 (914) 476-9000

MODEL No: 7709-B/7709-C

ISSUED: 1-87

REVISED: 9-96

TOWEL SHELF UNIT WITH DRYING ROD



SPECIFICATION

Towel Shelf Unit with Drying Rod shall be fabricated of alloy 18-8 stainless steel, type 304. Shelf posts shall have N^o18 gauge formed mounting plates welded on ends. Cross tubes shall be 3/8" (10mm) dia. x 20 gauge and shall be held captive in receiver holes in support posts. Snap-on escutcheon plates shall be supplied to conceal fasteners. A 1/4" (6mm) dia. solid steel drying rod shall be attached at midspan of support posts. Surface finish shall be bright or satin as chosen by option. Length shall be as chosen from schedule. Unit shall meet Federal Specification N^oWW-P541/8A.

Towel Shelf Unit with Drying Rod shall be Model N^o7709-BS (or N^o7709-BB or N^o7709-CS or N^o7709-CB) as fabricated by American Specialties, Inc. 441 Saw Mill River Road Yonkers, New York 10701- 4913

INSTALLATION

Shelf is surfaced mounted on wall using N^o10 self tapping screws (provided). Escutcheon plate is snapped on to mounting plate to conceal fasteners. For compliance with ADA Accessibility Guidelines, unit should be installed with shelf top 54" (1372mm) maximum above finished floor (AFF) if clear floor side reach access is provided or 48" (1219mm) maximum AFF if clear floor forward reach access only is provided or 46" (1168mm) maximum AFF if side reach over an obstruction (i.e. vanity) is only provided.

OPTIONAL FINISHES AND LENGTHS

P/N	FINISH	LENGTH	P/N	FINISH	LENGTH
7709-BS	Satin	18"	7709-CS	Satin	24"
7709-BB	Bright	18"	7709-CB	Bright	24"

Accessory Specialties

AMERICAN DISPENSER

Desert Ray Products

WATROUS INC.