



AMERICAN SPECIALTIES, INC.

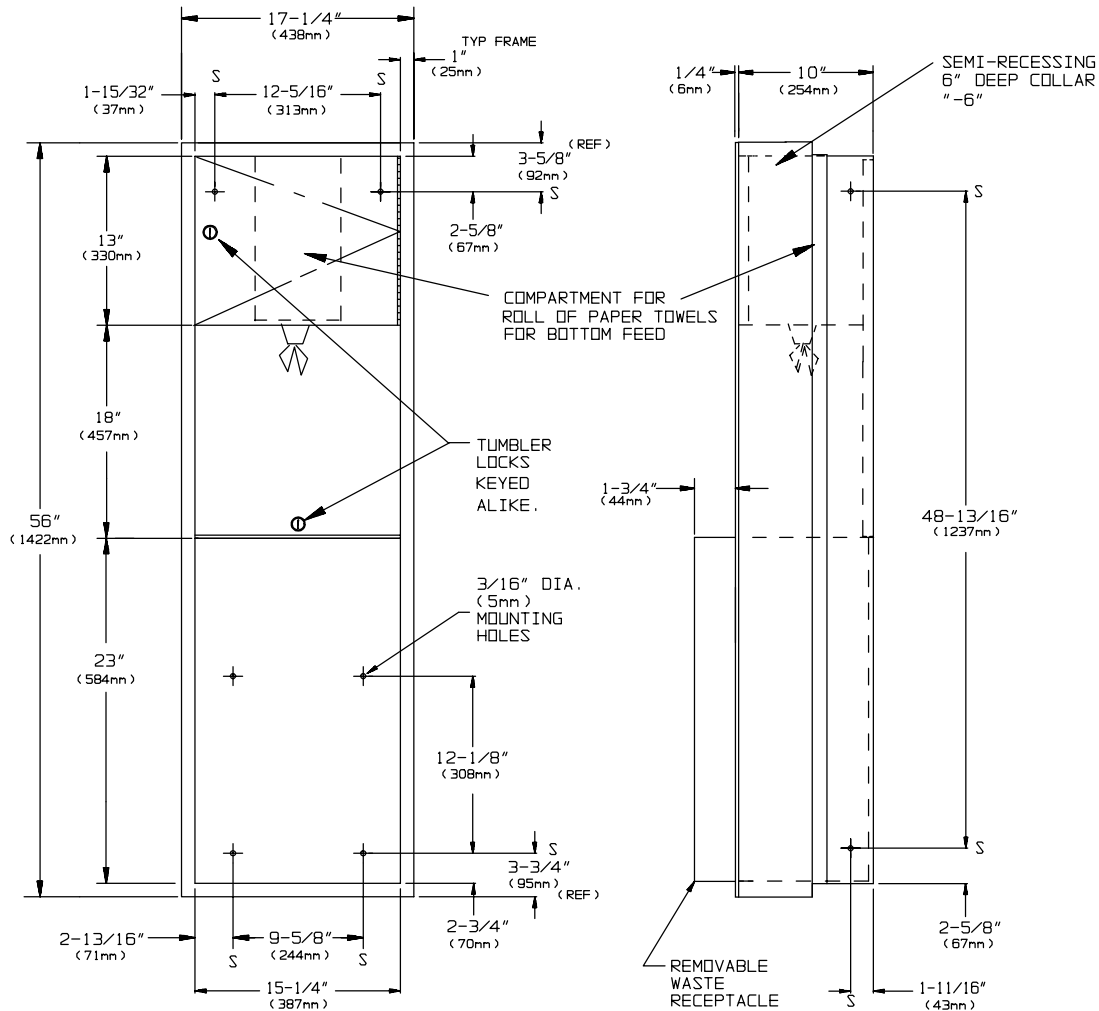
441 Saw Mill River Road, Yonkers, NY 10701 (914) 476-9000
www.americanspecialties.com

MODEL No: 04693-6

ISSUED: 1-87

REVISED: 7-05

SEMI-RECESSED PULL CORE PAPER TOWEL CABINET AND WASTE RECEPTACLE



SPECIFICATION

Semi-Recessed Pull Core Paper Towel Cabinet and Waste Receptacle shall accommodate one Pull Core paper towel roll and shall have a waste capacity of 18 gal. (68 liters). Flange, waste receptacle and cabinet shall be 18-8, type 304, 22 gauge; stainless steel; door shall be 18-8, type 304, 18 gauge. All exposed surfaces shall have N°4 satin finish. Unit provided with a semi-recessing collar 6", option "-6".

Semi-Recessed Pull Core Paper Towel Cabinet and Waste Receptacle shall be Model N° 04693-6 as manufactured by American Specialties, Inc. 441 Saw Mill River Road Yonkers, New York 10701-4913

INSTALLATION

Unit is semi recessed mounted in wall recess using N°10 self tapping screws (by others) through concealed mounting holes provided. For compliance with ADA Accessibility Guidelines, unit should be installed so that Pull Core towel is 54" (1372mm) maximum above finished floor (AFF) if clear floor side reach access is provided or 48" (1219mm) maximum AFF if clear floor forward reach access only is provided. Note that top of RWO is 3/4" (19mm) below top of unit.

Rough Wall Opening (RWO) required is...15-3/4"W x 54-1/2"H x 4-1/4"D (400mm x 1384mm x 108mm).

OPERATION

Towels are pulled until supply is depleted. Towel feed length is determined by towel perforations. Waste is emptied manually.

Accessory Specialties

AMERICAN DISPENSER

Desert Ray Products

WATROUS .INC.